



Marine Grade LCD Bridge Monitor  
Slimline Aluminum Bezel  
Sunlight Viewable LED Backlighting

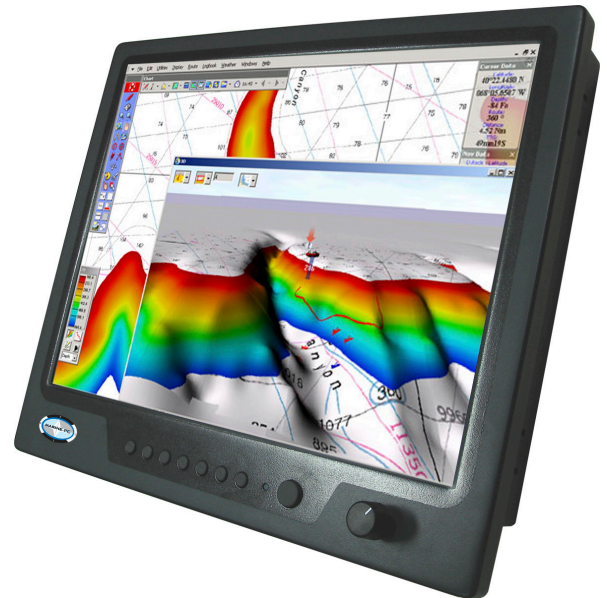
# MPC-SL19

## 19" Marine Grade LCD Monitor

## New Slim Bezel Mounts Anywhere

## LED Backlight Brighter, Dimmer

The MPC-SL19 is a marine grade flat panel Active Matrix LCD Monitor designed for extremely rugged use where the front must be fully sealed from water, oil, dirt and other contaminants. The MPC-SL19 has a 19" diagonal display, designed for use anywhere onboard in a console or bulkhead, or it can also be VESA mounted. The front located manual dimming control adjusts the LED display brightness from max to super-dim for optimal operator viewing clarity and comfort in any lighting condition. The MPC-SL19 connects to any standard PC through the VGA output using any standard VGA cable. The monitor can also receive DVI-D video input from a high performance computer or other video sources. S-video and composite video inputs are also available for camera or other NTSC/PAL signals. The native resolution is 1280x1024, but the MPC-SL19 will auto-scale any 4:3 resolution to fit full screen. Picture-in-Picture capability is standard. An optional touch screen will operate perfectly even in the wettest conditions. The matte black aluminum case and conformally coated electronics virtually eliminates any chance of corrosion for a very long service life. The standard anti-reflective protective glass is bonded to the LCD, eliminating internal and external reflections and fogging. The attractive slim bezel and compact case allow mounting in very tight spaces. When properly mounted and sealed in place, the front is rated IP65. Common applications include primary display or repeater from a computer, chart plotter, blackbox radar or sounder or weather computer. Multiple functionality can be achieved by adding inputs from engine room, docking or common space cameras, as well as thermal and night vision cameras.



### Standard Features

- Slim All-Aluminum Front Bezel Rated IP65.
- Space Saving: 14.78" x 16.61" x 2.20"
- 19" Color TFT AMLCD, Bonded AR Protective Glass.
- SXGA(1280x1024) Native Resolution.
- 1,000 nit Brightness, 900:1 Contrast Ratio.
- Manual Linear Dimming knob from Max to Zero.
- Dual Standard RGB Video from any Computer.
- Dual DVI-D from Radar or other Computer.
- 3 - Composite Video Inputs.
- P-in-P Standard, Remote control option.
- Flush Bezel for Console Mounting, or VESA.
- Powered from 9 - 30 VDC or optional 120/240 VAC.
- Optional Waterproof Touchscreen.

[WWW.MARINEPC.COM](http://WWW.MARINEPC.COM)



Marine Grade LCD Bridge Monitor  
 Slimline Aluminum Bezel  
 Sunlight Readable LED Backlighting

# MPC-SL19

## Specifications

- Display** 15" Diagonal Active Matrix TFT LCD: XGA 1280x1024 pixels, 900:1 Contrast Ratio, 16.2 Million Colors
- Brightness** 1,000 nits sunlight readable brightness, Dimmable 1000:1 for Night time Operation, LED Backlight
- Video Input** 2 x RGB 4:3 Video from Any Standard Computer, supports VGA, SVGA, XGA, SXGA Auto-Scaling to Full Screen  
 2 x DVI-D Inputs, 3 - Composite Video Inputs
- Touchscreen (Optional)** Analog Resistive, 2048x2048 Resolution, USB Connection to PC.
- Cable** Power - None, Terminal Strip Provided  
 1 - Video - 6 Ft. (2m.) Shielded Cable, Standard Mini-DIN DB-15 M-M  
 1 - DVI-D - 6 ft. (2m) Shielded Cable, Hi-Density DVI Connectors
- Housing** All Aluminum, Black Finish, IP65 Splashproof Front, IP22 Rear
- Mounting** Flush Mount Bezel for Mounting in Panel or Frame. 75 and 100 VESA Mounting Holes in Rear.
- Weight** 12.3 kg / 27 lbs.
- Power (Max)** 45 Watts 9 - 30 VDC
- Environmental**

	<b>Operating</b>	<b>Non-Operating</b>
Temperature (Air Ambient)	-10°C to 50°C (14°F to 122°F)	-20°C to 70°C (-4°F to 158°F)
Relative Humidity	5% to 95%, non-condensing	
Shock	50 G (half-sine for 30msec.)	
Vibration	1.0 G (@ 5 - 500 Hz sine sweep, 3 - axis)	
- MTBF** 30,000 Hrs.
- Standards** IEC EN60945, CE, FCC Class A, Part 15

